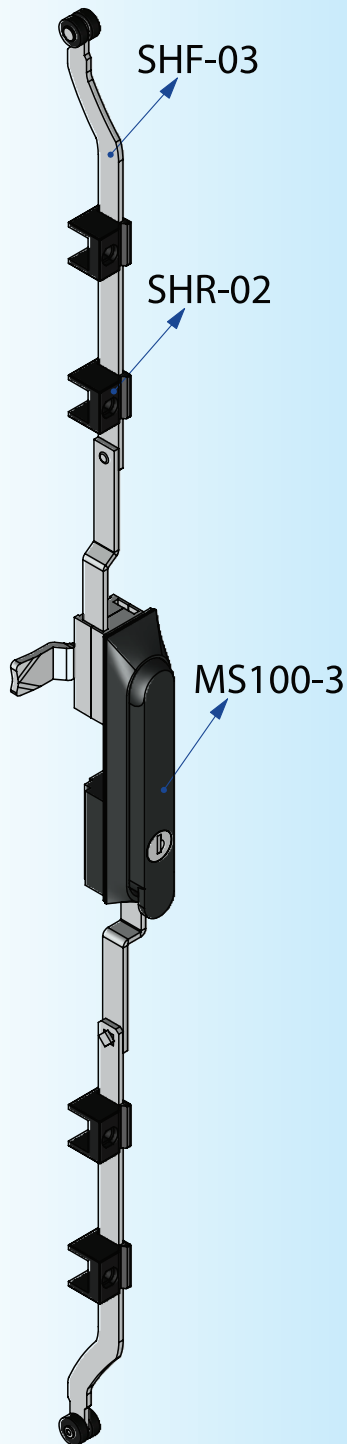


Model: MS 100-3

3D Rendered View

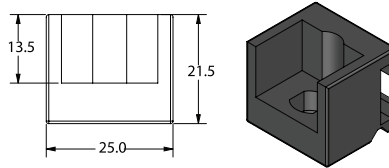
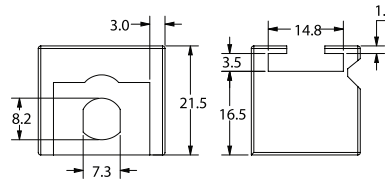


3-Point Lock Flat Rod Accessories

3-POINT LOCK FLAT ROD VERSION ACCESSORIES

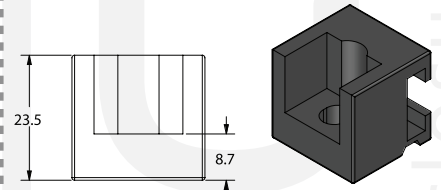
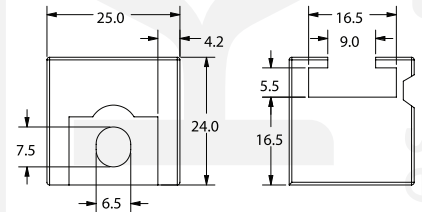
OPTION 1

SHF 02-3MM



- ▶ MATERIAL: PA-6 GF 30%
- ▶ FINISH: MATT BLACK

SHF 02 5MM

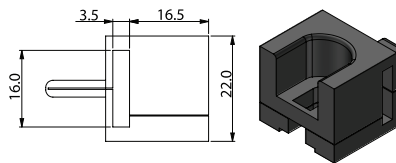
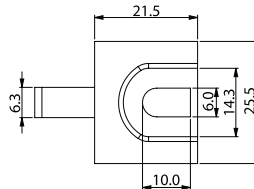


- ▶ MATERIAL: PA-6 GF 30%
- ▶ FINISH: MATT BLACK

OPTION 2

RG 03-1

FOLDABLE GUIDE

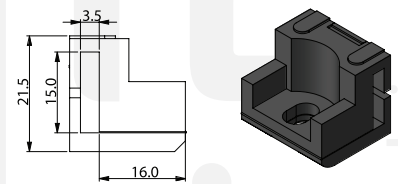
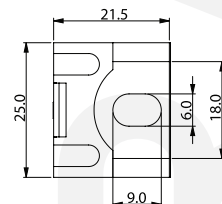


- ▶ MATERIAL: PA-6 GF 30%
- ▶ FINISH: MATT BLACK

OPTION 3

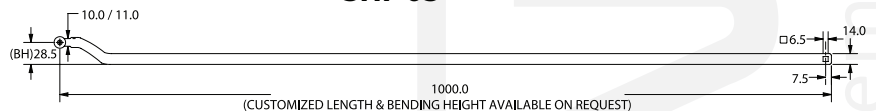
RG 03-2

FOLDABLE GUIDE



- ▶ MATERIAL: PA-6 GF 30%
- ▶ FINISH: MATT BLACK

SHF 03



- ▶ MATERIAL: MILD STEEL & SS 304 / SS 316
- ▶ FINISH: ZINC WITH TRIVALENT BLUE PLATING & BUFFING POLISHING