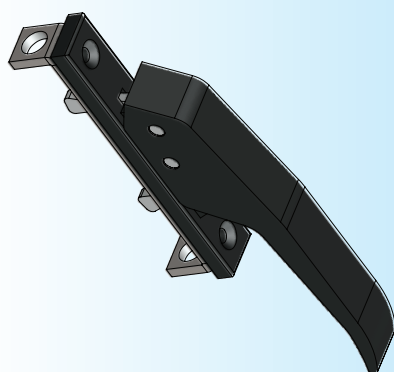


Model: OA 45H

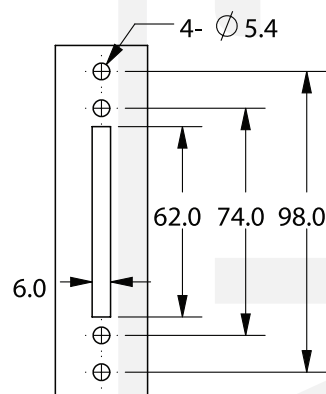
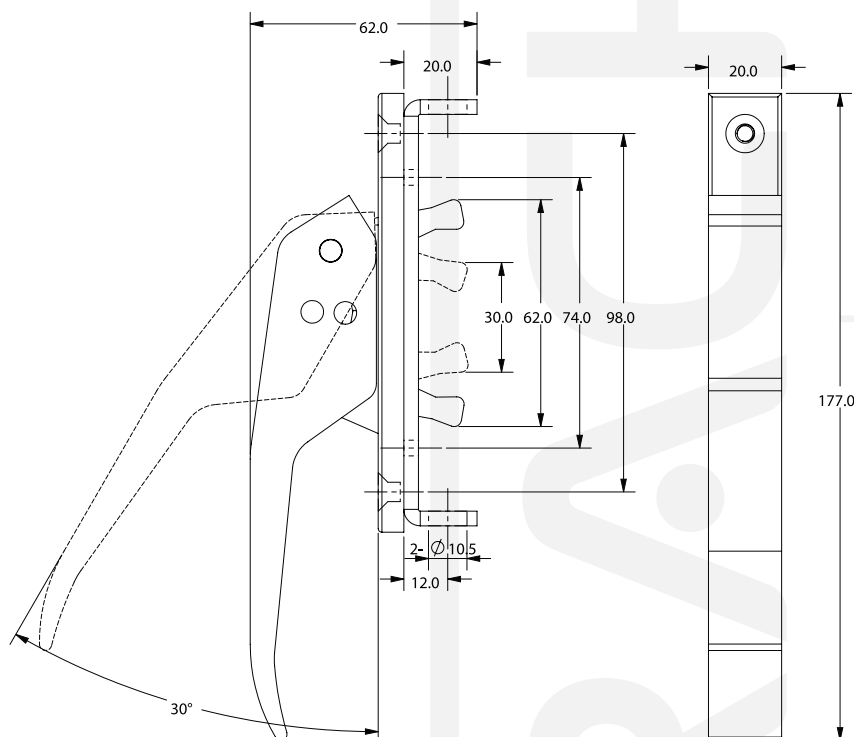
Photo View



3D Rendered View



- ▶ MATERIAL: ZINC DIE CASTING BODY, STEEL FIXING PARTS & PIN
- ▶ FINISH: BLACK POWDER COATED / BRIGHT CHROME PLATING
- ▶ STRUCTURE: HANDLE, LOCKED BY ROD. ADJUSTABLE 16MM, LEFT & RIGHT HAND USE
- ▶ PANEL THICKNESS: 1-3MM



CUT-OUT