

Model: MS 816-2

RL

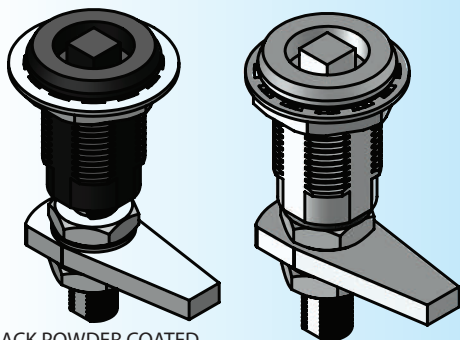
IP54



### Photo View



### 3D Rendered View

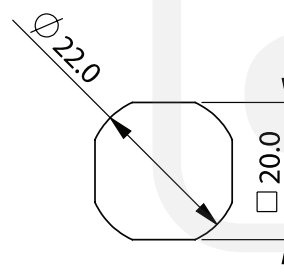
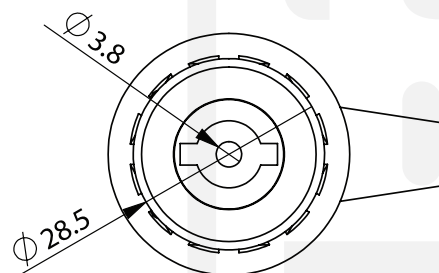
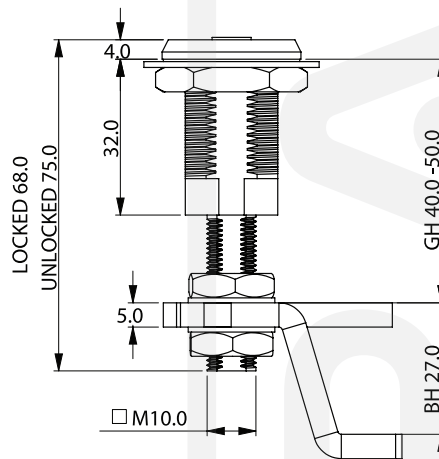
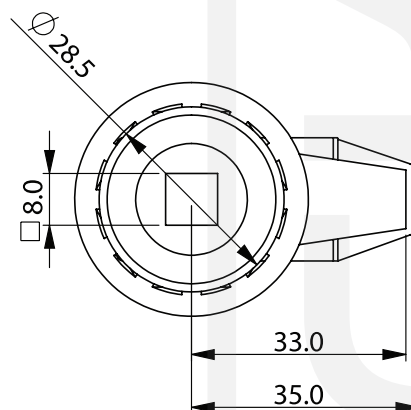


BLACK POWDER COATED

BRIGHT CHROME PLATING

- ▶ MATERIAL: ZINC DIE CASTING BODY, ZINC PLATING FIXING PARTS
- ▶ FINISH: BLACK POWDER COATED / BRIGHT CHROME PLATING
- ▶ REMARK: COMPRESSION LATCH, 6.5MM PULL-UP

### COMPRESSION LOCK



CUT-OUT