

Model: MS 306-1-1 ▶

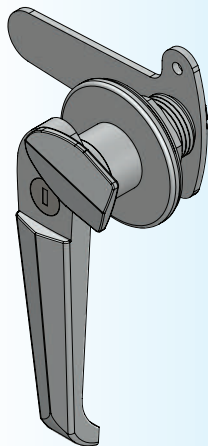
RL



### Photo View



### 3D Rendered View



- ▶ MATERIAL: ZINC DIE CASTING BODY, ZINC PLATING FIXING PARTS
- ▶ FINISH: BRIGHT CHROME PLATING
- ▶ ROTATION ANGLE: 60° (CW & ACW)
- ▶ PANEL THICKNESS: 1-5MM

