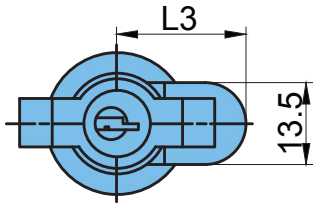
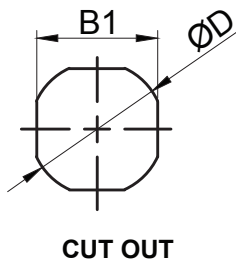
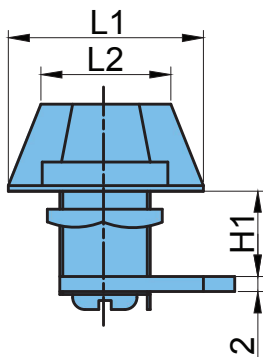


## MS-408-1-1



**Material** Zinc Die Casting-Body, Steel Cam, Steel with Plastic Moulded- Key.

**Finish** Black Powder Coated



Part No	L1	L2	L3	B1	H1	ØD
MS 408-1-1	50	32.5	50	20	18	22
MS 408-3-1	32	22	24	14.2	15	16
MS 408-3-1T	48	37	24	14.2	15	16