



Photo View

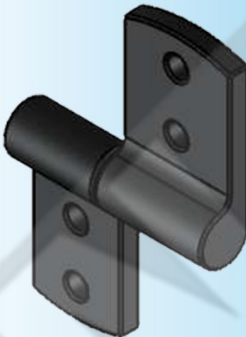


HL 300Z - 1R



HL 300Z - 1L

3D Rendered View



HL 300Z - 1

- Material: Zinc alloy rotor-stator hinge, special steel pin
- Structure & Function: 2NM symmetric torque
- Static torque specification 20% over 25000 times cycle life Both Left & Right applicable with M5 screw for assemble
- Material: Steel
- Finish: Pocked chrome plating
- Remark: 270° Hinges

For Product Step File or 3D Model Send a Request Mail To info@nrack.com

Torque Hinge

